

OTIS

GeN2™ Mod



[www.otis.com](http://www.otis.com)

Printed on PEFC 100% paper Cert. No PEFC/10-31-1232



Printed in E.U. 26 251 (01. 2012)

THE WAY TO GREEN™





Let Otis show you  
**THE WAY TO GREEN**  
with energy-efficient Gen2™ Mod technology.

The question isn't if you should modernize, it's when.



### A better environment

Gen2 Mod operates cleanly and efficiently in your building.



### Unparalleled performance

Enhanced reliability and comfort for the improved value of your building.



### Safer people, products, processes

Doing our part to make your environment safer.



### Proven expertise

More than 150 years of experience, leveraged for your building.



## A better environment.

Gen2 Mod operates cleanly and efficiently in your building.



### More efficient

- Uses up to 75 percent less energy when combined with ReGen™ drives compared to conventional systems with non-regenerative drives.
- May free up valuable building space.
- Minimizes the need for cooling systems in the machine room.



### Cleaner operations

- Gen2 machine and flat belts require no additional lubrication.
- New LED illumination uses less energy and lasts up to 10 times longer than fluorescent lamps.
- With the automatic switch-off mode, LED lighting uses up to 80 percent less energy than fluorescent lamps.



### Best-in-class performance

- The energy-efficiency of Gen2 elevators have been validated based on standards set by the engineering association Verein Deutscher Ingenieure (VDI).
- Gen2 Mod elevators installed in recent building modernization projects achieved an overall A energy-efficiency class rating.
- Your Otis representative can provide an energy savings estimate specifically calculated for your building.

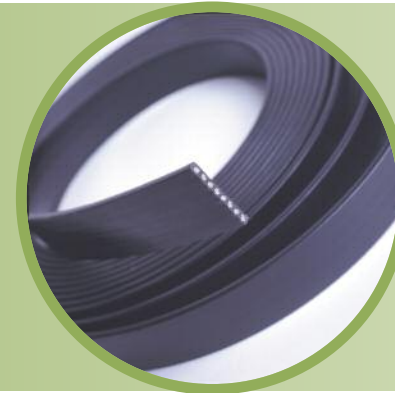
## Unparalleled performance.

Enhanced reliability and comfort for the improved value of your building.



### Reliability you can depend on

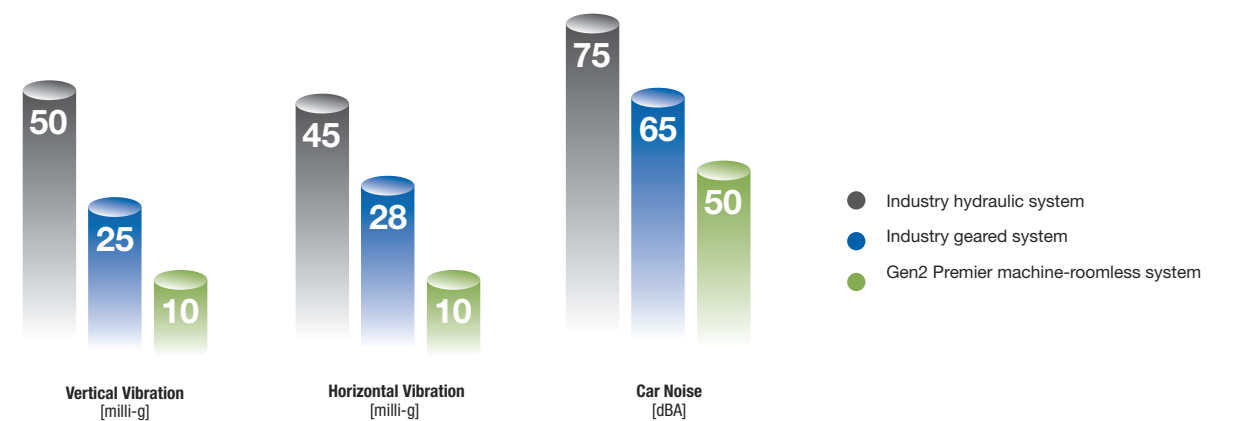
- ➔ Modernizing your elevator today improves reliability and reduces shut downs and the risk of entrapments.
- ➔ Our mechanics and products work around the clock so you don't have to give reliability a second thought.



### A smoother, quieter ride

- ➔ The Gen2 system's flat belts enable a smooth, quiet ride that passengers and tenants will appreciate.

#### Industry comparison





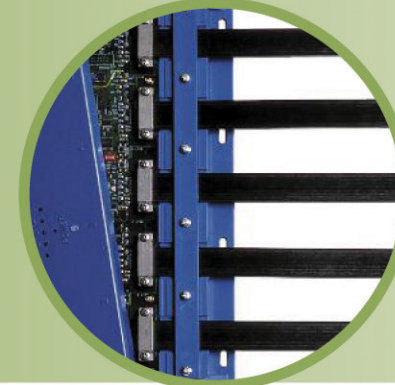


**Safer people, products, processes.**  
Doing our part to make your environment safer.



### Safety is Otis' core value

- Technology has improved since your elevator was installed. Gen2 Mod uses advanced technology to improve safety.
- Otis has one of the best, proven safety records in the industry.
- Code requirements have evolved over time. Otis code experts will work with you to meet or exceed foreseeable code requirements.



### Peace of mind, 24 hours a day

- The Pulse™ system continuously monitors belt integrity for greater peace of mind and precise diagnosis. This feature is available only on Gen2 systems and not with traditional rope elevators.
- Elevators equipped with REM™ monitoring service experience fewer shutdowns and shorter repair times.
- eService offers customers instant online access to important information about their elevators – 24 hours a day.



### Precise leveling accuracy

- Gen2 Mod delivers precise stopping and leveling accuracy to reduce tripping hazards and ensure passenger safety as they board and exit the elevator.



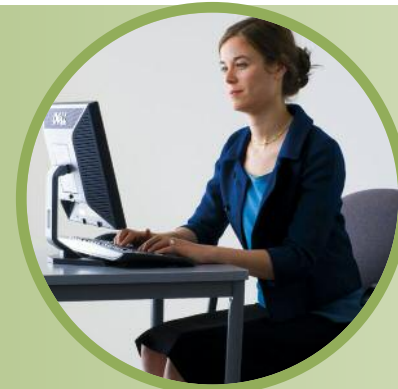
## Proven expertise.

More than 150 years of experience,  
leveraged for your building.



### Process oriented

- ➔ Otis' expansive modernization experience ensures we use methods specifically designed to minimize disruption to your building.
- ➔ Our processes reduce installation time while delivering exceptional results.



### Proactive communications

- ➔ Otis experts will partner with you and let you know what to expect, in advance.
- ➔ We will communicate with you and your tenants to keep you updated on our progress.



### Project management

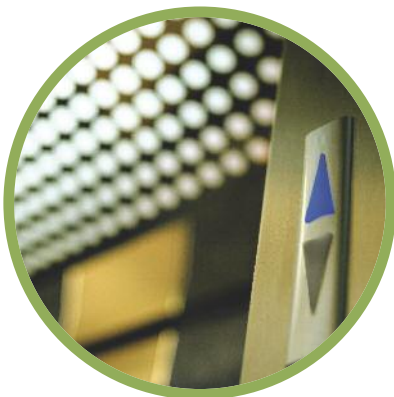
- ➔ Our professionals know the importance of staying on schedule and within budget and we'll work closely with you to meet or exceed your expectations.
- ➔ Our experience with large and small modernization projects ensures your equipment will be modernized efficiently with minimal disruption to your building.

The Empire State Building design  
is a registered trademark and  
used with permission by ESBC.



Designed, manufactured and serviced to minimize environmental impact.

Otis follows The Way To Green throughout your product's lifecycle.



Design

Thanks to innovative engineering, Gen2 systems are designed to minimize carbon footprint by optimizing the size, materials and weight of components, all while incorporating new aesthetics and the latest energy-saving technologies, such as ReGen drives and LED lighting options. Gen2 systems are also designed for an efficient shipping process with reduced packaging.



Manufacturing

Gen2 elevators are manufactured at facilities strategically located near the largest markets for short, efficient trips to customers' sites. And among our Gen2 manufacturing facilities, we have a green solar-powered factory in Madrid, Spain, and the Otis Elevator Company TEDA Centre in Tianjin, China, which earned the U.S. Green Building Council's LEED Gold-level certification.



Removal

In preparation for the installation of your new Gen2 system, Otis experts will remove the existing elevator from your building safely and with minimal disruption to you and your tenants. The materials that are removed go through careful examination and where possible, Otis will recycle the materials that are removed.



Installation

With a standard and streamlined installation process, Gen2 elevators do not require scaffolds, thereby reducing installation material requirements and excess scrap materials. In addition, Otis' processes reduce installation time and disruption to your building.



Maintenance

Otis is committed to ensuring optimal equipment performance throughout each product's lifecycle. Innovative technologies like the Pulse and REM systems and our customer focused Otis Elite™ service programme let Otis engineers precisely identify or anticipate possible issues. And when our mechanics arrive at customer sites, they are prepared to make repairs quickly and efficiently, and in the greenest way possible – from recycling to safe waste removal to environmentally friendly cleaners.



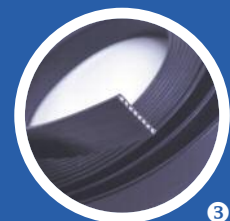
End-of-life Recycling

Gen2 systems are designed for recyclability. In fact, more than 95 percent of the materials used in Gen2 systems are recyclable. This includes the coated-steel flat belts that enable Gen2 technology to achieve such environmentally friendly performance. Otis has partnered with suppliers to organize recycling programmes specifically for these belts.



### ReGen drive

Clean, green and up to 75% more energy-efficient than conventional systems with non-regenerative drives



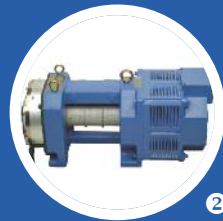
### Flexible coated steel belts

For outstanding design flexibility



### LED lighting

Up to 80% more efficient and lasts up to 10 times longer than conventional lighting



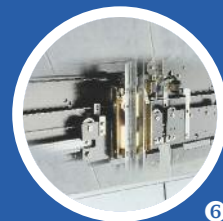
### Compact gearless machine

70% smaller and up to 50% more efficient than conventional geared machines



### Pulse belt monitoring system

Greater assurance with continuous, accurate monitoring and reporting



### Closed-loop door operators

Quieter and more efficient



## Investing in the safety and value of your building

- ➔ Gen2 technology can be applied to a wide range of building applications.
- ➔ Otis experts will partner with you to find the right Gen2 solution for your building.

### A flexible solution for every building



✓ Residential



✓ Low-Rise



✓ Office



✓ Mid-Rise



✓ Commercial



✓ High-Rise



**Sophisticated options** for your building's unique needs.



### Otis Elite™ service

- Elite experts can proactively resolve issues before building tenants are aware they even exist.
- Flexible functionality allows for greater control such as the ability to designate and remove a car from the group for tenant move-ins.
- Enhanced reliability including best-in-class uptime guarantees.



### Compass™ destination management

- Group passengers by location and priority for quick and orderly travel.
- Personalized service enables tenants of a VIP floor to be directed to an express elevator.



### EMS Panorama™

- This web-based system offers complete transparency and enables building staff to monitor, control, report on and manage a full range of elevator functions.
- The system offers added security, enabling building owners to restrict access to certain floors or lock down elevators as needed.



### Aesthetics

- Updated aesthetics give a fresh look to elevator cabs and can greatly enhance value and passenger experience.
- Otis offers a wide array of optional aesthetic packages that are sure to enhance your building's design while leaving a positive impression on building visitors.



The Way to Green is about our commitment to continually moving our company and our customers forward.



### At Otis, The Way to Green begins with green thinking. On a global scale.

We encourage and enable our more than 60,000 employees worldwide to address the future positively and proactively. We recognize that The Way to Green is an ongoing effort. But with the commitment of our people and our resources around the world, we know we can move our company, our suppliers and our customers closer to a shared goal of using greener products, services and solutions. Otis invites you to join us on this continuous journey on The Way to Green.

## Join Otis on our journey to **THE WAY TO GREEN**

It starts with a commitment to environmentally friendly solutions: Innovative products and services that reduce cost and energy usage.

### The Gen2 advantage. For our environment. For your site.

The world keeps moving forward. And so do we. Otis leverages smarter technologies and intelligent engineering to continuously enhance our signature solutions, like our flagship Gen2 elevator system. Our award-winning Gen2 elevator family reflects our determination to satisfy customers with both state-of-the-art energy efficiency and world-class ride quality and comfort.



### Global actions. Local solutions.

The Way to Green is our commitment to continuous improvement – reducing energy usage and enhancing performance. So, it's not surprising that Otis elevators, escalators and moving walkways are a part of many of the most well-recognized and significant buildings across the globe. Otis delivers environmentally friendly solutions for every building need today: from malls to metro stations, from apartments to skyscrapers, from comprehensive maintenance programmes to equipment upgrades and enhancements. After all, we know that The Way to Green is the smart way to help our customers save money, energy and the planet.